

Anti-MKI67 antibody [ABT104R] (STJA0006295)

GENERAL INFORMATION

Product Type	Primary antibodies
Applications	IHC/IF
Host / Source	Rabbit
Reactivity	Human

PRODUCT PROPERTIES

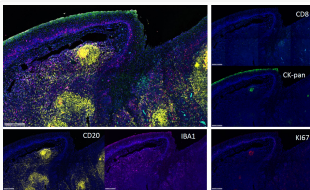
Clonality	Monoclonal
Conjugation	Unconjugated
Purification	The antibody was affinity-purified from cell supernatant by affinity-chromatography using specific immunogen.
Dilution Range	IHC-p 1:200-400 IF 1:200-400
Formulation	Liquid in PBS pH7.4 containing 50% Glycerol and 0.03% Proclin 300.
Isotype	IgG
Molecular Weight	Calculated: 359kD
Storage Instruction	Store at -20°C for up to 1 year from the date of receipt, and avoid repeat freeze-thaw cycles.

TARGET INFORMATION

Gene ID	4288
Gene Symbol	MKI67
UniProt ID	K167_HUMAN
Specificity	The antibody can specifically recognize human Ki-67 protein.

ADDITIONAL INFORMATION

Note **STRICTLY FOR FURTHER SCIENTIFIC RESEARCH USE ONLY (RUO). MUST NOT TO BE USED IN DIAGNOSTIC OR THERAPEUTIC APPLICATIONS.**



Fluorescence multiplex immunohistochemical analysis of Human tonsil tissue (formalin-fixed paraffin-embedded section). The immunostaining was performed by Pentuple-Fluorescence kit. CK-pan mouse monoclonal antibody (STJ197095 green), Ki-67 rabbit monoclonal antibody (STJA0006295) red, Iba 1 mouse monoclonal antibody (purple), CD8 a mouse monoclonal antibody (cyan), CD20 mouse monoclonal antibody (yellow). The section was incubated in 5 rounds of staining; sequentially for Anti-antibodies; each using a separate fluorescent tyramide signal amplification system. EDTA based antigen retrieval (pH 9.0, 20 minutes) was used in between rounds of tyramide signal amplification to remove the antibody from the previous round, to avoid any cross-reactivity. DAPI (dark blue) was used as a nuclear counter stain. Microscopy and pseudocoloring of individual dyes was performed using a Slideviewer Imaging System (Excilone).