

## Anti-CDH1 antibody (700-800) [ABT181] (STJA0006294)

### GENERAL INFORMATION

Product Type	Primary antibodies
Applications	IHC/WB/ELISA
Host / Source	Mouse
Reactivity	Human/Mouse/Rat

### PRODUCT PROPERTIES

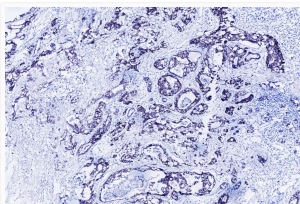
Clonality	Monoclonal
Conjugation	Unconjugated
Purification	The antibody was purified using affinity-chromatography using specific immunogen.
Dilution Range	IHC-p 1:200-400 WB 1:500-2000
Formulation	Liquid in PBS containing 50% Glycerol, 0.5% BSA and 0.02% Sodium Azide.
Isotype	IgG1k
Molecular Weight	Calculated: 97kD Observed: 120kD
Storage Instruction	Store at -20°C for up to 1 year from the date of receipt, and avoid repeat freeze-thaw cycles.

### TARGET INFORMATION

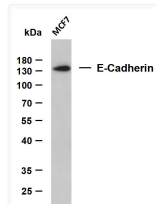
Gene ID	<a href="#">999</a>
Gene Symbol	<a href="#">CDH1</a>
UniProt ID	<a href="#">CADH1_HUMAN</a>
Immunogen Region	700-800
Specificity	This antibody detects endogenous levels of human E-Cadherin. Heat-induced epitope retrieval (HIER) TRIS-EDTA of pH8.0 was highly recommended as antigen repair method in paraffin section

### ADDITIONAL INFORMATION

Note STRICTLY FOR FURTHER SCIENTIFIC RESEARCH USE ONLY (RUO). MUST NOT TO BE USED IN DIAGNOSTIC OR THERAPEUTIC APPLICATIONS.



Human Breast carcinoma tissue was stained with E-cadherin (ABT181) Antibody



Whole cell lysates were separated by 15% SDS-PAGE, and the membrane was blotted with anti-E-Cadherin (ABT181) antibody. The HRP-conjugated Goat anti- mouse IgG (H + L) antibody was used to detect the antibody. Lane 1: MCF7 Predicted band size: 97kDa Observed band size: 120kDa