

Anti-SMAD1 antibody (400-465) [PTR2351] (STJA0006276)

GENERAL INFORMATION

Product Type	Primary antibodies
Applications	WB/ELISA
Host / Source	Mouse
Reactivity	Human/Rat/Mouse

PRODUCT PROPERTIES

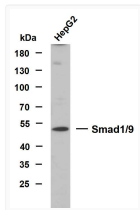
Clonality	Monoclonal
Concentration	1 mg/mL
Conjugation	Unconjugated
Purification	The antibody was affinity-purified from rabbit serum by affinity-chromatography using specific immunogen.
Dilution Range	WB 1:500-2000
Formulation	Liquid in PBS containing 50% Glycerol, 0.5% BSA and 0.02% Sodium Azide.
Isotype	IgG2ak
Molecular Weight	Observed: 58-60kD
Storage Instruction	Store at -20°C for up to 1 year from the date of receipt, and avoid repeat freeze-thaw cycles.

TARGET INFORMATION

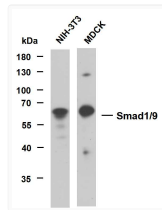
Gene ID	4086
Gene Symbol	SMAD1
UniProt ID	SMAD1_HUMAN
Immunogen Region	400-465
Specificity	This antibody detects endogenous levels of Smad1/9 at Human, Predict react with Mouse, Rat

ADDITIONAL INFORMATION

Note **STRICTLY FOR FURTHER SCIENTIFIC RESEARCH USE ONLY (RUO). MUST NOT TO BE USED IN DIAGNOSTIC OR THERAPEUTIC APPLICATIONS.**



Whole cell lysates were separated by 10% SDS-PAGE, and the membrane was blotted with anti-Smad1/9 (PTR2351) antibody. The HRP-conjugated Goat anti-mouse IgG (H + L) antibody was used to detect the antibody. Lane 1: HepG2 Predicted band size: 52kDa Observed band size: 52kDa



Various whole cell lysates were separated by 10% SDS-PAGE, and the membrane was blotted with anti-Smad1/9 (PTR2351) antibody. The HRP-conjugated Goat anti-mouse IgG (H + L) antibody was used to detect the antibody. Lane 1: NIH-3T3 Lane 2: MDCK Predicted band size: 52kDa Observed band size: 57kDa