

Anti-Phospho-EIF2S1-Ser51 antibody (1-100) [PTR1316] (STJA0006271)

GENERAL INFORMATION

Product Type	Primary antibodies
Applications	WB/ELISA
Host / Source	Mouse
Reactivity	Human/Mouse/Rat

PRODUCT PROPERTIES

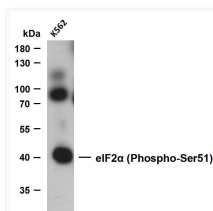
Clonality	Monoclonal
Concentration	1 mg/mL
Conjugation	Unconjugated
Purification	The antibody was affinity-purified from rabbit serum by affinity-chromatography using specific immunogen.
Dilution Range	WB 1:500-2000
Formulation	Liquid in PBS containing 50% Glycerol, 0.5% BSA and 0.02% Sodium Azide.
Isotype	IgG2bk
Molecular Weight	Calculated: 36kD Observed: 40kD, 90kD
Storage Instruction	Store at -20°C for up to 1 year from the date of receipt, and avoid repeat freeze-thaw cycles.

TARGET INFORMATION

Gene ID	1965
Gene Symbol	EIF2S1
UniProt ID	IF2A_HUMAN
Immunogen Region	1-100
Specificity	This antibody detects endogenous levels of eIF2 Alpha at Human, Predict react with Mouse, Rat

ADDITIONAL INFORMATION

Note STRICTLY FOR FURTHER SCIENTIFIC RESEARCH USE ONLY (RUO). MUST NOT TO BE USED IN DIAGNOSTIC OR THERAPEUTIC APPLICATIONS.



Western Blot (WB): Whole cell lysates were separated by 10% SDS-PAGE, and the membrane was blotted with anti-eIF2α STJA0006271