

Anti-ATP1A1 antibody (150-250) [PTR2543] (STJA0006258)

GENERAL INFORMATION

Product Type	Primary antibodies
Applications	IHC/ELISA
Host / Source	Mouse
Reactivity	Human/Mouse/Rat

PRODUCT PROPERTIES

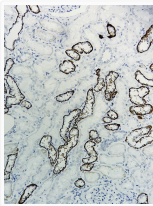
Clonality	Monoclonal
Conjugation	Unconjugated
Purification	Purified using Protein G purification.
Dilution Range	IHC-p 1:50-200
Formulation	Liquid in PBS pH7.4 containing 50% Glycerol and 0.03% Proclin 300.
Isotype	IgG3k
Storage Instruction	Store at -20°C for up to 1 year from the date of receipt, and avoid repeat freeze-thaw cycles.

TARGET INFORMATION

Gene ID	478 477 476 ATP1A3 ATP1A2 AT1A3_HUMAN AT1A2_HUMAN AT1A1_HUMAN
Immunogen Region	150-250
Specificity	This antibody detects endogenous levels of Sodium Potassium ATPase at Human, Mouse, Rat

ADDITIONAL INFORMATION

Note STRICTLY FOR FURTHER SCIENTIFIC RESEARCH USE ONLY (RUO). MUST NOT TO BE USED IN DIAGNOSTIC OR THERAPEUTIC APPLICATIONS.



Human kidney tissue was stained with Anti-Sodium Potassium ATPase (PTR2543) Antibody