

Anti-MGMT antibody (1-100) [PTR2300] (STJA0006253)

GENERAL INFORMATION

Product Type	Primary antibodies
Applications	WB/ELISA
Host / Source	Mouse
Reactivity	Human

PRODUCT PROPERTIES

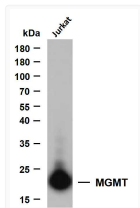
Clonality	Monoclonal
Concentration	1 mg/mL
Conjugation	Unconjugated
Purification	The antibody was affinity-purified from rabbit serum by affinity-chromatography using specific immunogen.
Dilution Range	WB 1:500-2000
Formulation	Liquid in PBS containing 50% Glycerol, 0.5% BSA and 0.02% Sodium Azide.
Isotype	IgG2bk
Molecular Weight	Calculated: 22kD Observed: 22kD
Storage Instruction	Store at -20°C for up to 1 year from the date of receipt, and avoid repeat freeze-thaw cycles.

TARGET INFORMATION

Gene ID	4255
Gene Symbol	MGMT
UniProt ID	MGMT_HUMAN
Immunogen Region	1-100
Specificity	This antibody detects endogenous levels of MGMT at Human, Predict react with Mouse;Rat

ADDITIONAL INFORMATION

Note STRICTLY FOR FURTHER SCIENTIFIC RESEARCH USE ONLY (RUO). MUST NOT TO BE USED IN DIAGNOSTIC OR THERAPEUTIC APPLICATIONS.



Whole cell lysates were separated by 10% SDS-PAGE, and the membrane was blotted with anti-MGMT (PTR2300) antibody. The HRP-conjugated Goat anti-mouse IgG (H + L) antibody was used to detect the antibody. Lane 1: Jurkat Predicted band size: 22kDa Observed band size: 22kDa