

Anti-ESR1 antibody (450-595) [PTR2124] (STJA0006244)

GENERAL INFORMATION

Product Type	Primary antibodies
Applications	WB/IHC/ELISA
Host / Source	Mouse
Reactivity	Human

PRODUCT PROPERTIES

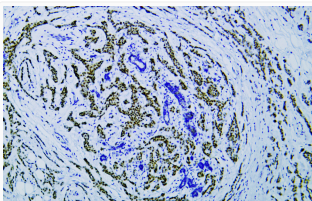
Clonality	Monoclonal
Concentration	1 mg/mL
Conjugation	Unconjugated
Purification	The antibody was purified using affinity-chromatography using specific immunogen.
Dilution Range	WB 1:500-2000 IHC 1:50-200
Formulation	Liquid in PBS containing 50% Glycerol and 0.02% Sodium Azide.
Isotype	IgG2bk
Molecular Weight	Calculated: 66kD Observed: 67kD
Storage Instruction	Store at -20°C for up to 1 year from the date of receipt, and avoid repeat freeze-thaw cycles.

TARGET INFORMATION

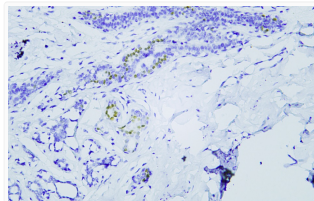
Gene ID	2099
Gene Symbol	ESR1
UniProt ID	ESR1_HUMAN
Immunogen Region	450-595
Specificity	This antibody detects endogenous levels of Estrogen Receptor Alpha at Human; Predict react with mouse, rat

ADDITIONAL INFORMATION

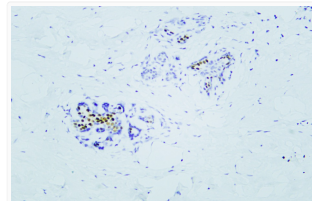
Note **STRICTLY FOR FURTHER SCIENTIFIC RESEARCH USE ONLY (RUO). MUST NOT TO BE USED IN DIAGNOSTIC OR THERAPEUTIC APPLICATIONS.**



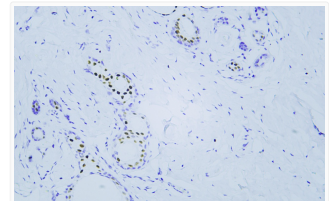
Human breast carcinoma tissue was stained with Anti-Estrogen Receptor α (PTR2124) Antibody



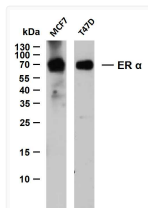
Human breast tissue was stained with Anti-Estrogen Receptor α (PTR2124) Antibody



Human breast tissue was stained with Anti-Estrogen Receptor α (PTR2124) Antibody



Human breast tissue was stained with Anti-Estrogen Receptor α (PTR2124) Antibody



Various whole cell lysates were separated by 12% SDS-PAGE, and the membrane was blotted with anti-ER α (PTR2124) antibody. The HRP-conjugated Goat anti- mouse IgG (H + L) antibody was used to detect the antibody. Lane 1: MCF7
Lane 2: T47D
Predicted band size: 67kDa
Observed band size: 67kDa