

Anti-TUBG1 antibody (350-451) [PT2188] (STJA0006240)

GENERAL INFORMATION

Product Type	Primary antibodies
Applications	WB/ELISA
Host / Source	Mouse
Reactivity	Human

PRODUCT PROPERTIES

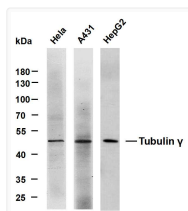
Clonality	Monoclonal
Concentration	1 mg/mL
Conjugation	Unconjugated
Purification	The antibody was purified using affinity-chromatography using specific immunogen.
Dilution Range	WB 1:500-2000
Formulation	Liquid in PBS containing 50% Glycerol and 0.02% Sodium Azide.
Isotype	IgG2bk
Molecular Weight	Observed: 48kD
Storage Instruction	Store at -20°C for up to 1 year from the date of receipt, and avoid repeat freeze-thaw cycles.

TARGET INFORMATION

Gene ID	7283
Gene Symbol	TUBG1
UniProt ID	TBG1_HUMAN
Immunogen Region	350-451
Specificity	This antibody detects endogenous levels of Tubulin Gamma at Human; Maybe react with mouse, rat

ADDITIONAL INFORMATION

Note **STRICTLY FOR FURTHER SCIENTIFIC RESEARCH USE ONLY (RUO). MUST NOT TO BE USED IN DIAGNOSTIC OR THERAPEUTIC APPLICATIONS.**



Various whole cell lysates were separated by 10% SDS-PAGE, and the membrane was blotted with anti-Tubulin γ (PT2188) antibody. The HRP-conjugated anti-mouse IgG antibody was used to detect the antibody. Lane 1: HeLa Lane 2: A431 Lane 3: HepG2 Predicted band size: 48kDa Observed band size: 48kDa