

Anti-CDH4 antibody (150-250) [PT2127] (STJA0006237)

GENERAL INFORMATION

| | |
|---------------|--------------------|
| Product Type | Primary antibodies |
| Applications | WB/ELISA |
| Host / Source | Mouse |
| Reactivity | Human/Mouse/Rat |

PRODUCT PROPERTIES

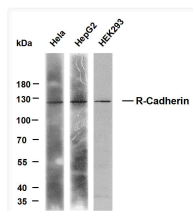
| | |
|---------------------|------------------------------------------------------------------------------------------------|
| Clonality | Monoclonal |
| Concentration | 1 mg/mL |
| Conjugation | Unconjugated |
| Purification | The antibody was purified using affinity-chromatography using specific immunogen. |
| Dilution Range | WB 1:500-2000 |
| Formulation | Liquid in PBS containing 50% Glycerol and 0.02% Sodium Azide. |
| Isotype | IgG1k |
| Molecular Weight | Calculated: 102kD Observed: 120kD |
| Storage Instruction | Store at -20°C for up to 1 year from the date of receipt, and avoid repeat freeze-thaw cycles. |

TARGET INFORMATION

| | |
|------------------|----------------------------------------------------------------------------|
| Gene ID | 1002 |
| Gene Symbol | CDH4 |
| UniProt ID | CADH4_HUMAN |
| Immunogen Region | 150-250 |
| Specificity | This antibody detects endogenous levels of R-Cadherin at Human, mouse, rat |

ADDITIONAL INFORMATION

Note STRICTLY FOR FURTHER SCIENTIFIC RESEARCH USE ONLY (RUO). MUST NOT TO BE USED IN DIAGNOSTIC OR THERAPEUTIC APPLICATIONS.



Various whole cell lysates were separated by 8% SDS-PAGE, and the membrane was blotted with anti-R-Cadherin (PT2127) antibody. The HRP-conjugated anti-mouse IgG antibody was used to detect the antibody. Lane 1: HeLa Lane 2: HepG2 Lane 3: HEK293 Predicted band size: 100kDa Observed band size: 120kDa