

Anti-NFE2L2 antibody (300-400) [PTR2557] (STJA0006234)

GENERAL INFORMATION

Product Type	Primary antibodies
Applications	WB/ELISA
Host / Source	Mouse
Reactivity	Human/Mouse/Rat

PRODUCT PROPERTIES

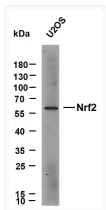
Clonality	Monoclonal
Conjugation	Unconjugated
Purification	Purified using Protein G purification.
Dilution Range	WB 1:500-2000 ELISA 1:5000-20000
Formulation	Liquid in PBS pH7.4 containing 50% Glycerol and 0.03% Proclin 300.
Isotype	IgMk
Molecular Weight	Calculated: 68kD Observed: 100kD
Storage Instruction	Store at -20°C for up to 1 year from the date of receipt, and avoid repeat freeze-thaw cycles.

TARGET INFORMATION

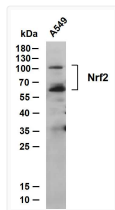
Gene ID	4780
Gene Symbol	NFE2L2
UniProt ID	NFE2L2_HUMAN
Immunogen Region	300-400
Specificity	This antibody detects endogenous levels of Nrf2 at Human, Mouse, Rat

ADDITIONAL INFORMATION

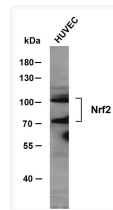
Note **STRICTLY FOR FURTHER SCIENTIFIC RESEARCH USE ONLY (RUO). MUST NOT TO BE USED IN DIAGNOSTIC OR THERAPEUTIC APPLICATIONS.**



Whole cell lysates of U2OS were separated by 12% SDS-PAGE, and the membrane was blotted with Nrf2 antibody. The HRP-conjugated anti-mouseIgG antibody was used to detect the antibody. Lane 1: U2OS Predicted band size: 68kDa Observed band size: 65kDa



Whole cell lysates were separated by 12% SDS-PAGE, and the membrane was blotted with anti-Nrf2 antibody. The HRP-conjugated anti-mouseIgG antibody was used to detect the antibody. Lane 1: A549 Predicted band size: 68kDa Observed band size: 100, 70kDa



Whole cell lysates were separated by 8% SDS-PAGE, and the membrane was blotted with anti-Nrf2 antibody. The HRP-conjugated anti-mouseIgG antibody was used to detect the antibody. Lane 1: HUVEC Predicted band size: 68kDa Observed band size: 100, 70kDa