

## Anti-CD27 antibody (160-260) [PT1818] (STJA0006232)

### GENERAL INFORMATION

Product Type	Primary antibodies
Applications	WB/ELISA
Host / Source	Mouse
Reactivity	Human

### PRODUCT PROPERTIES

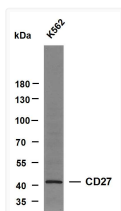
Clonality	Monoclonal
Concentration	1 mg/mL
Conjugation	Unconjugated
Purification	The antibody was affinity-purified from rabbit serum by affinity-chromatography using specific immunogen.
Dilution Range	WB 1:500-2000
Formulation	Liquid in PBS containing 50% Glycerol, 0.5% BSA and 0.02% Sodium Azide.
Isotype	IgG2bk
Molecular Weight	Calculated: 29kD Observed: 40kD
Storage Instruction	Store at -20°C for up to 1 year from the date of receipt, and avoid repeat freeze-thaw cycles.

### TARGET INFORMATION

Gene ID	<a href="#">939</a>
Gene Symbol	<a href="#">CD27</a>
UniProt ID	<a href="#">CD27_HUMAN</a>
Immunogen Region	160-260
Specificity	This antibody detects endogenous levels of CD27 at Human, Predict react with Mouse

### ADDITIONAL INFORMATION

Note STRICTLY FOR FURTHER SCIENTIFIC RESEARCH USE ONLY (RUO). MUST NOT TO BE USED IN DIAGNOSTIC OR THERAPEUTIC APPLICATIONS.



Whole cell lysates were separated by 8% SDS-PAGE, and the membrane was blotted with anti-CD27 (PT1818) antibody. The HRP-conjugated anti-mouse IgG antibody was used to detect the antibody. Lane 1: K562 Predicted band size: 29kDa Observed band size: 40kDa