

Anti-STAT1 antibody (650-750) [PTR2109] (STJA0006226)

GENERAL INFORMATION

Product Type	Primary antibodies
Applications	WB/ELISA
Host / Source	Mouse
Reactivity	Human/Dog

PRODUCT PROPERTIES

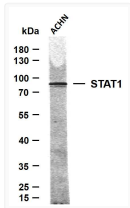
Clonality	Monoclonal
Concentration	1 mg/mL
Conjugation	Unconjugated
Purification	The antibody was purified using affinity-chromatography using specific immunogen.
Dilution Range	WB 1:500-2000
Formulation	Liquid in PBS containing 50% Glycerol and 0.02% Sodium Azide.
Isotype	IgG2ak
Molecular Weight	Calculated: 87kD Observed: 87kD
Storage Instruction	Store at -20°C for up to 1 year from the date of receipt, and avoid repeat freeze-thaw cycles.

TARGET INFORMATION

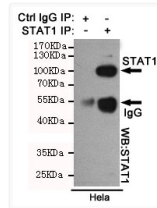
Gene ID	6772
Gene Symbol	STAT1
UniProt ID	STAT1_HUMAN
Immunogen Region	650-750
Specificity	This antibody detects endogenous levels of Stat1 at Human; Predict react with Mouse

ADDITIONAL INFORMATION

Note STRICTLY FOR FURTHER SCIENTIFIC RESEARCH USE ONLY (RUO). MUST NOT TO BE USED IN DIAGNOSTIC OR THERAPEUTIC APPLICATIONS.



Western Blot (WB): Whole cell lysates were separated by 10% SDS-PAGE, and the membrane was blotted with anti-STAT1 STJA0006226



Western Blot (WB): Immunoprecipitation analysis of HeLa cell lysates using STAT1 mouse mAb.