

Anti-TUBB3 antibody [5G3] {FITC} (STJA0006215)

GENERAL INFORMATION

Product Type	Primary antibodies
Applications	WB/IF/IHC
Host / Source	Mouse
Reactivity	Human/Rat/Mouse/Monkey/Dog/Chicken/Hamster/Rabbit/Sheep/Insect/Yeast

PRODUCT PROPERTIES

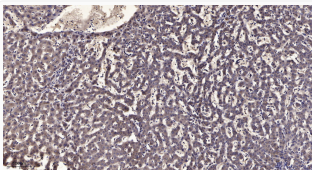
Clonality	Monoclonal
Concentration	1 mg/mL
Conjugation	FITC
Purification	The antibody was purified using affinity-chromatography using specific immunogen.
Dilution Range	Optimal working dilutions should be determined experimentally by the investigator Suggested starting dilutions are as follows: IHC 1:200 IF 1:200
Formulation	Liquid in PBS pH7.4, containing 0.02% Sodium Azide and 50% Glycerol.
Isotype	IgG1
Storage Instruction	Store at -20°C for up to 1 year from the date of receipt, and avoid repeat freeze-thaw cycles.

TARGET INFORMATION

Gene ID	10381
Gene Symbol	TUBB3
UniProt ID	TBB3_HUMAN
Specificity	Beta-Tubulin Monoclonal Antibody (5G3) FITC conjugated specially designed for your WB or IHC analysis.

ADDITIONAL INFORMATION

Note **STRICTLY FOR FURTHER SCIENTIFIC RESEARCH USE ONLY (RUO). MUST NOT TO BE USED IN DIAGNOSTIC OR THERAPEUTIC APPLICATIONS.**



Immunohistochemical analysis of paraffin-embedded human liver cancer. 1, Antibody was diluted at 1:200 (4°C overnight). 2, Tris-EDTA, pH9.0 was used for antigen retrieval. 3, Secondary antibody was diluted at 1:200 (room temperature, 45min).