

Anti-TUBB3 antibody [5G3] {Cy3} (STJA0006213)

GENERAL INFORMATION

Product Type	Primary antibodies
Applications	WB/IF/IHC
Host / Source	Mouse
Reactivity	Human/Rat/Mouse/Monkey/Dog/Chicken/Hamster/Rabbit/Sheep/Insect/Yeast

PRODUCT PROPERTIES

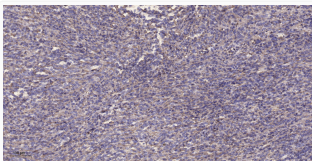
Clonality	Monoclonal
Concentration	1 mg/mL
Conjugation	Cy3
Purification	The antibody was purified using affinity-chromatography using specific immunogen.
Dilution Range	Optimal working dilutions should be determined experimentally by the investigator Suggested starting dilutions are as follows: IHC 1:200 IF 1:200
Formulation	Liquid in PBS pH7.4, containing 0.02% Sodium Azide and 50% Glycerol.
Isotype	IgG1
Storage Instruction	Store at -20°C for up to 1 year from the date of receipt, and avoid repeat freeze-thaw cycles.

TARGET INFORMATION

Gene ID	10381
Gene Symbol	TUBB3
UniProt ID	TBB3_HUMAN
Specificity	Beta-Tubulin Monoclonal Antibody (5G3) Cy3 Conjugated specially designed for your Immunofluorescence analysis.

ADDITIONAL INFORMATION

Note STRICTLY FOR FURTHER SCIENTIFIC RESEARCH USE ONLY (RUO). MUST NOT TO BE USED IN DIAGNOSTIC OR THERAPEUTIC APPLICATIONS.



Immunohistochemical analysis of paraffin-embedded human Colon cancer. 1, Antibody was diluted at 1:200 (4°C overnight). 2, Tris-EDTA, pH9.0 was used for antigen retrieval. 3, Secondary antibody was diluted at 1:200 (room temperature, 45min).