

Anti-TUBA1A antibody [8F11] {Biotin} (STJA0006189)

GENERAL INFORMATION

Product Type	Primary antibodies
Applications	WB/IHC/IF/IP
Host / Source	Mouse
Reactivity	Human/Rat/Mouse

PRODUCT PROPERTIES

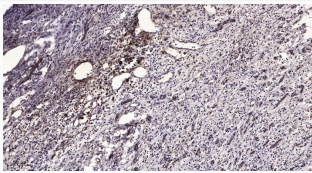
Clonality	Monoclonal
Concentration	1 mg/mL
Conjugation	Biotin
Purification	The antibody was purified using affinity-chromatography using specific immunogen.
Dilution Range	Optimal working dilutions should be determined experimentally by the investigator Suggested starting dilutions are as follows: WB 1:5000-10000 IHC 1:50-300
Formulation	Liquid in PBS pH7.4, containing 0.02% Sodium Azide and 50% Glycerol.
Isotype	IgG
Storage Instruction	Store at -20°C for up to 1 year from the date of receipt, and avoid repeat freeze-thaw cycles.

TARGET INFORMATION

Gene ID	10376 7846
Gene Symbol	TUBA1B TUBA1A
UniProt ID	TBA1B_HUMAN TBA1A_HUMAN
Specificity	Alpha-tubulin Monoclonal Antibody (8F11) Biotin conjugated specially designed for your WB or IHC analysis.

ADDITIONAL INFORMATION

Note STRICTLY FOR FURTHER SCIENTIFIC RESEARCH USE ONLY (RUO). MUST NOT TO BE USED IN DIAGNOSTIC OR THERAPEUTIC APPLICATIONS.



Immunohistochemical analysis of paraffin-embedded human liver cancer. 1, Antibody was diluted at 1:200 (4°C overnight). 2, Tris-EDTA, pH9.0 was used for antigen retrieval. 3, Secondary antibody was diluted at 1:200 (room temperature, 45min).