

## Anti-TUBA1A antibody [8F11] {AbFluor™ 350} (STJA0006182)

### GENERAL INFORMATION

|               |                    |
|---------------|--------------------|
| Product Type  | Primary antibodies |
| Applications  | WB/IHC/IF/IP       |
| Host / Source | Mouse              |
| Reactivity    | Human/Rat/Mouse    |

### PRODUCT PROPERTIES

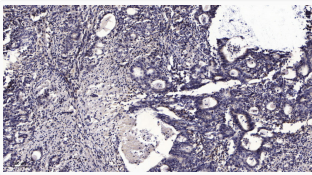
|                     |  |
|---------------------|--|
| Clonality           | Monoclonal   |
| Concentration       | 1 mg/mL  |
| Conjugation         | AbFluor™ 350   |
| Purification        | The antibody was purified using affinity-chromatography using specific immunogen.  |
| Dilution Range      | Optimal working dilutions should be determined experimentally by the investigator Suggested starting dilutions are as follows: IHC 1:50-300 IF 1:200 |
| Formulation         | Liquid in PBS pH7.4, containing 0.02% Sodium Azide and 50% Glycerol.   |
| Isotype             | IgG  |
| Storage Instruction | Store at -20°C for up to 1 year from the date of receipt, and avoid repeat freeze-thaw cycles.   |

### TARGET INFORMATION

|             |   |
|-------------|---|
| Gene ID     | <a href="#">7846</a><br><a href="#">10376</a>   |
| Gene Symbol | <a href="#">TUBA1A</a><br><a href="#">TUBA1B</a>  |
| UniProt ID  | <a href="#">TBA1A_HUMAN</a><br><a href="#">TBA1B_HUMAN</a>  |
| Specificity | Alpha-tubulin Monoclonal Antibody (8F11) AbFluor™ 350 Conjugated specially designed for your Immunofluorescence analysis. |

### ADDITIONAL INFORMATION

Note STRICTLY FOR FURTHER SCIENTIFIC RESEARCH USE ONLY (RUO). MUST NOT TO BE USED IN DIAGNOSTIC OR THERAPEUTIC APPLICATIONS.



Immunohistochemical analysis of paraffin-embedded human Gastric adenocarcinoma. 1, Antibody was diluted at 1:200 (4°C overnight). 2, Tris-EDTA, pH9.0 was used for antigen retrieval. 3, Secondary antibody was diluted at 1:200 (room temperature, 45min).