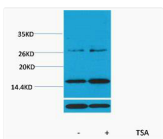


**Anti-Acetyl-HIST1H3A/HIST1H3B/HIST1H3C/HIST1H3D/HIST1H3E/HIST1H3F/HIST1H3G/HIST1H3H/HIST1H3I/HIST1H3J/HIST2H3A/HIST2H3C/HIST2H3D/H3F3A/H3F3B-Lys14 antibody (STJA0006009)**

GENERAL INFORMATION	
Product Type	Primary antibodies
Applications	WB
Host / Source	Rabbit
Reactivity	Human/Mouse/Rat
PRODUCT PROPERTIES	
Clonality	Polyclonal
Conjugation	Unconjugated
Purification	The antibody was affinity-purified from rabbit antiserum by affinity-chromatography using specific immunogen.
Dilution Range	WB 1:500-1000
Formulation	Liquid in PBS pH7.4, containing 0.5% BSA, 0.02% Sodium Azide and 50% Glycerol.
Isotype	IgG
Molecular Weight	Observed: 15-17kD
Storage Instruction	Store at -20°C for up to 1 year from the date of receipt, and avoid repeat freeze-thaw cycles.
TARGET INFORMATION	
Gene ID	<a href="#">8350/8351/8352/8353/8354/8355/8356/8357/8358/8968</a> <a href="#">1</a>
Gene Symbol	<a href="#">H3C1_H3C2_H3C3_H3C4_H3C6_H3C7_H3C8_H3C10_H3C11_H3C12</a> <a href="#">H31_HUMAN</a> <a href="#">H32_HUMAN</a> <a href="#">H33_HUMAN</a> <
Specificity	The antibody detects endogenous Histone H3 (Acetyl Lys14) protein.
ADDITIONAL INFORMATION	
Note	STRICTLY FOR FURTHER SCIENTIFIC RESEARCH USE ONLY (RUO). MUST NOT TO BE USED IN DIAGNOSTIC OR THERAPEUTIC APPLICATIONS.



Western blot analysis of extracts from HeLa cells, untreated (-) or treated, 1:2000. Secondary antibody (STJ99666) was diluted at 1:20000 cells nucleus extracted by Minus™™ Cytoplasmic and Nuclear Fractionation kit (SC-003, Inventibiotech, MN, USA).