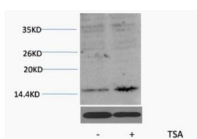


Anti-Acetyl-HIST1H3A/HIST1H3B/HIST1H3C/HIST1H3D/HIST1H3E/HIST1H3F/HIST1H3G/HIST1H3H/HIST1H3I/HIST1H3J/HIST2H3A/HIST2H3C/HIST2H3D/H3F3A/H3F3B-Lys27 antibody (STJA0006008)

GENERAL INFORMATION	
Product Type	Primary antibodies
Applications	WB
Host / Source	Rabbit
Reactivity	Human/Mouse/Rat
PRODUCT PROPERTIES	
Clonality	Polyclonal
Conjugation	Unconjugated
Purification	The antibody was affinity-purified from rabbit antiserum by affinity-chromatography using specific immunogen.
Dilution Range	WB 1:200-500
Formulation	Liquid in PBS pH7.4, containing 0.5% BSA, 0.02% Sodium Azide and 50% Glycerol.
Isotype	IgG
Molecular Weight	Observed: 15-17kD
Storage Instruction	Store at -20°C for up to 1 year from the date of receipt, and avoid repeat freeze-thaw cycles.
TARGET INFORMATION	
Gene ID	126961/333932/653604 3020/3021 H3C15_H3C14_H3C13 H3_3A_H3_3B H32_HUMAN H33_HUMAN H31_HUMAN <
Specificity	The antibody detects endogenous Histone H3 (Acetyl Lys27) protein.
ADDITIONAL INFORMATION	
Note	STRICTLY FOR FURTHER SCIENTIFIC RESEARCH USE ONLY (RUO). MUST NOT TO BE USED IN DIAGNOSTIC OR THERAPEUTIC APPLICATIONS.



Western blot analysis of extracts from HeLa cells, untreated (-) or treated, 1:2000. Secondary antibody (STJ99666) was diluted at 1:20000 cells nucleus extracted by Minute™ Cytoplasmic and Nuclear Fractionation kit (SC-003, InventiBiotech, MN, USA).