

## Anti-Cleaved-MMP19-Tyr98 antibody (97-98) (STJA0005890)

### GENERAL INFORMATION

|               |                    |
|---------------|--------------------|
| Product Type  | Primary antibodies |
| Applications  | WB/IHC             |
| Host / Source | Rabbit             |
| Reactivity    | Human/Mouse        |

### PRODUCT PROPERTIES

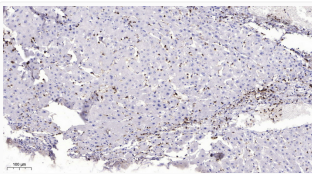
|                     |   |
|---------------------|---|
| Clonality           | Polyclonal  |
| Concentration       | 1 mg/mL   |
| Conjugation         | Unconjugated  |
| Purification        | The antibody was affinity-purified from rabbit serum by affinity-chromatography using specific immunogen. |
| Dilution Range      | WB 1:500-2000<br>IHC-p 1:50-300   |
| Formulation         | Liquid in PBS containing 50% Glycerol, 0.5% BSA and 0.02% Sodium Azide.                                   |
| Isotype             | IgG   |
| Molecular Weight    | Observed: 45kD, 55kD  |
| Storage Instruction | Store at -20°C for up to 1 year from the date of receipt, and avoid repeat freeze-thaw cycles.            |

### TARGET INFORMATION

|                  |   |
|------------------|---|
| Gene ID          | <a href="#">4327</a>  |
| Gene Symbol      | <a href="#">MMP19</a>   |
| UniProt ID       | <a href="#">MMP19_HUMAN</a>   |
| Immunogen Region | 97-98   |
| Specificity      | This antibody detects endogenous levels of Human, Mouse MMP19 (Cleaved-Tyr98, protein was cleaved amino acid sequence between 97-98 ) |

### ADDITIONAL INFORMATION

Note STRICTLY FOR FURTHER SCIENTIFIC RESEARCH USE ONLY (RUO). MUST NOT TO BE USED IN DIAGNOSTIC OR THERAPEUTIC APPLICATIONS.



Immunohistochemical analysis of paraffin-embedded human liver cancer. 1, Antibody was diluted at 1:200 (4°C overnight). 2, Tris-EDTA, pH9.0 was used for antigen retrieval. 3, Secondary antibody was diluted at 1:200 (room temperature, 45min).