

Anti-Cleaved-ITGAE-Ala179, Heavy Chain antibody (178-179) (STJA0005875)

GENERAL INFORMATION

Product Type	Primary antibodies
Applications	WB/IHC
Host / Source	Rabbit
Reactivity	Human/Rat/Mouse

PRODUCT PROPERTIES

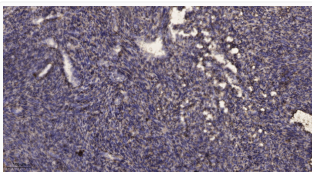
Clonality	Polyclonal
Concentration	1 mg/mL
Conjugation	Unconjugated
Purification	The antibody was affinity-purified from rabbit serum by affinity-chromatography using specific immunogen.
Dilution Range	WB 1:500-2000 IHC-p 1:50-300
Formulation	Liquid in PBS containing 50% Glycerol, 0.5% BSA and 0.02% Sodium Azide.
Isotype	IgG
Molecular Weight	Observed: 110kD, 128kD
Storage Instruction	Store at -20°C for up to 1 year from the date of receipt, and avoid repeat freeze-thaw cycles.

TARGET INFORMATION

Gene ID	3682
Gene Symbol	ITGAE
UniProt ID	ITAE_HUMAN
Immunogen Region	178-179
Specificity	This antibody detects endogenous levels of Human ITGAE (heavy chain, Cleaved-Ala179, protein was cleaved amino acid sequence between 178-179)

ADDITIONAL INFORMATION

Note STRICTLY FOR FURTHER SCIENTIFIC RESEARCH USE ONLY (RUO). MUST NOT TO BE USED IN DIAGNOSTIC OR THERAPEUTIC APPLICATIONS.



Immunohistochemical analysis of paraffin-embedded human uterus. 1, Antibody was diluted at 1:200 (4°C overnight). 2, Tris-EDTA, pH9.0 was used for antigen retrieval. 3, Secondary antibody was diluted at 1:200 (room temperature, 45min).