

Anti-Cleaved-CTSL-Ala114, Heavy Chain antibody (113-114) (STJA0005830)

GENERAL INFORMATION

Product Type	Primary antibodies
Applications	WB/ELISA
Host / Source	Rabbit
Reactivity	Human/Rat/Mouse

PRODUCT PROPERTIES

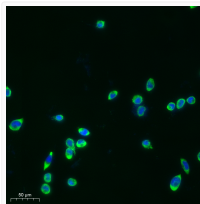
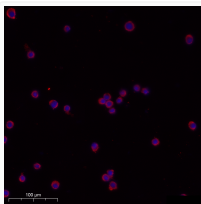
Clonality	Polyclonal
Concentration	1 mg/mL
Conjugation	Unconjugated
Purification	The antibody was affinity-purified from rabbit serum by affinity-chromatography using specific immunogen.
Dilution Range	WB 1:1000-2000 ELISA 1:5000-20000
Formulation	Liquid in PBS containing 50% Glycerol, 0.5% BSA and 0.02% Sodium Azide.
Isotype	IgG
Molecular Weight	Observed: 25kD, 37kD
Storage Instruction	Store at -20°C for up to 1 year from the date of receipt, and avoid repeat freeze-thaw cycles.

TARGET INFORMATION

Gene ID	1514
Gene Symbol	CTSL
UniProt ID	CATL1_HUMAN
Immunogen Region	113-114
Specificity	This antibody detects endogenous levels of Human CATL1 (heavy chain, Cleaved-Ala114, protein was cleaved amino acid sequence between 113-114)

ADDITIONAL INFORMATION

Note STRICTLY FOR FURTHER SCIENTIFIC RESEARCH USE ONLY (RUO). MUST NOT TO BE USED IN DIAGNOSTIC OR THERAPEUTIC APPLICATIONS.



Immunofluorescence analysis of Siha cell. 1, primary Antibody was diluted at 1:100 (4°C overnight). 2, Goat Anti Rabbit IgG (H&L) - AFluor 594 Secondary antibody (catalog No: STJS000476) was diluted at 1:500 (room temperature, 50min).

Immunofluorescence analysis of Siha cell. 1, primary Antibody was diluted at 1:100 (4°C overnight). 2, Goat Anti Rabbit IgG (H&L) - AFluor 488 Secondary antibody (catalog No:STJS000304) was diluted at 1:500 (room temperature, 50min).