

Anti-GRIA1 antibody (Internal Region) (STJA0005798)

GENERAL INFORMATION

Product Type	Primary antibodies
Applications	WB
Host / Source	Rabbit
Reactivity	Human/Mouse/Rat

PRODUCT PROPERTIES

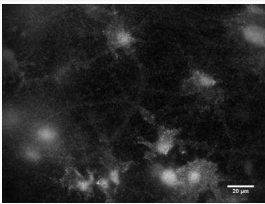
Clonality	Polyclonal
Conjugation	Unconjugated
Purification	Antigen Affinity Purified
Dilution Range	WB 1:500-1:1000
Formulation	PBS + 0.02% NaN3
Isotype	IgG
Storage Instruction	Store at -20°C for up to 1 year from the date of receipt, and avoid repeat freeze-thaw cycles.

TARGET INFORMATION

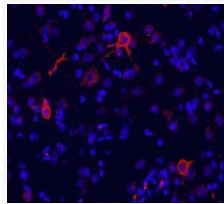
Gene ID	2890
Gene Symbol	GRIA1
UniProt ID	GRIA1_HUMAN
Immunogen Region	Internal Region
Specificity	Reacts with internal residues of the human, rat and mouse GluR1 alpha protein.

ADDITIONAL INFORMATION

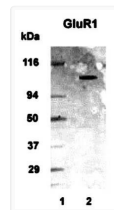
Note STRICTLY FOR FURTHER SCIENTIFIC RESEARCH USE ONLY (RUO). MUST NOT TO BE USED IN DIAGNOSTIC OR THERAPEUTIC APPLICATIONS.



ICC staining mGluR1 in primary rat cortical neurons STJA0005798



IHC staining mGluR1 red in rat brain cingulate cortex with DAPI nuclear counterstain blue STJA0005798



Western Blot specific mGluR1 immunolabeling in human brain lysate STJA0005798