

## Anti-SAP30L antibody (C-Term) (STJA0005776)

### GENERAL INFORMATION

|               |                    |
|---------------|--------------------|
| Product Type  | Primary antibodies |
| Applications  | WB                 |
| Host / Source | Rabbit             |
| Reactivity    | Human              |

### PRODUCT PROPERTIES

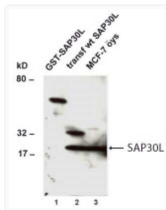
|                     |  |
|---------------------|--|
| Clonality           | Polyclonal   |
| Conjugation         | Unconjugated   |
| Purification        | Antigen Affinity Purified  |
| Dilution Range      | WB 1:500-1:1000  |
| Formulation         | PBS + 0.02% NaN <sub>3</sub>   |
| Isotype             | IgG  |
| Storage Instruction | Store at -20°C for up to 1 year from the date of receipt, and avoid repeat freeze-thaw cycles. |

### TARGET INFORMATION

|                  |  |
|------------------|--|
| Gene ID          | <a href="#">79685</a>  |
| Gene Symbol      | <a href="#">SAP30L</a>   |
| UniProt ID       | <a href="#">SP30L_HUMAN</a>  |
| Immunogen Region | C-Term   |
| Specificity      | Reacts with the C-terminal region of human SAP30L. Detects wild-type transfected hSAP30L or GST-hSAP30L fusion protein as well as endogenous hSAP30L in human cell lines (e.g., HEK293 and MCF-7 cells). Detects wild-type transfected hSAP30L or GST-hSAP |

### ADDITIONAL INFORMATION

Note STRICTLY FOR FURTHER SCIENTIFIC RESEARCH USE ONLY (RUO). MUST NOT TO BE USED IN DIAGNOSTIC OR THERAPEUTIC APPLICATIONS.



Western Blot SAP30L immunolabeling in NIH3T3 and MCF-7 cells STJA0005776