

Anti-DCBLD2 antibody (STJA0005741)

GENERAL INFORMATION

Product Type	Primary antibodies
Applications	WB
Host / Source	Rabbit
Reactivity	Human/Mouse/Rat

PRODUCT PROPERTIES

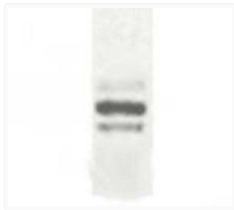
Clonality	Polyclonal
Conjugation	Unconjugated
Purification	Antigen Affinity Purified
Dilution Range	WB 1:500-1:1000
Formulation	PBS + 0.02% NaN ₃
Isotype	IgG
Storage Instruction	Store at -20°C for up to 1 year from the date of receipt, and avoid repeat freeze-thaw cycles.

TARGET INFORMATION

Gene ID	131566
Gene Symbol	DCBLD2
UniProt ID	DCBD2_HUMAN
Specificity	Reacts with human, mouse and rat ESDN protein

ADDITIONAL INFORMATION

Note STRICTLY FOR FURTHER SCIENTIFIC RESEARCH USE ONLY (RUO). MUST NOT TO BE USED IN DIAGNOSTIC OR THERAPEUTIC APPLICATIONS.



Western Blot ESDN-DCBLD2 immunolabeling in transfected 293T cells STJA0005741