

## Anti-ELP1 antibody (C-Term) (STJA0005693)

### GENERAL INFORMATION

Product Type	Primary antibodies
Applications	WB
Host / Source	Rabbit
Reactivity	Human

### PRODUCT PROPERTIES

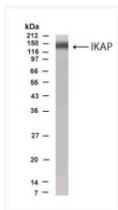
Clonality	Polyclonal
Conjugation	Unconjugated
Purification	Antigen Affinity Purified
Dilution Range	WB 1:500-1:1000
Formulation	PBS + 0.02% NaN <sub>3</sub>
Isotype	IgG
Storage Instruction	Store at -20°C for up to 1 year from the date of receipt, and avoid repeat freeze-thaw cycles.

### TARGET INFORMATION

Gene ID	<a href="#">8518</a>
Gene Symbol	<a href="#">ELP1</a>
UniProt ID	<a href="#">ELP1_HUMAN</a>
Immunogen Region	C-Term
Specificity	Reacts with the C-terminus of human IKAP protein.

### ADDITIONAL INFORMATION

Note STRICTLY FOR FURTHER SCIENTIFIC RESEARCH USE ONLY (RUO). MUST NOT TO BE USED IN DIAGNOSTIC OR THERAPEUTIC APPLICATIONS.



Western Blot IKAP immunolabeling in IL-1-stimulated 293 cell lysate STJA0005693