

Anti-ELP1 antibody (N-Term) (STJA0005692)

GENERAL INFORMATION

Product Type	Primary antibodies
Applications	WB
Host / Source	Rabbit
Reactivity	Human

PRODUCT PROPERTIES

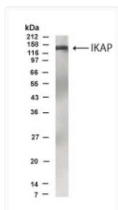
Clonality	Polyclonal
Conjugation	Unconjugated
Purification	Antigen Affinity Purified
Dilution Range	WB 1:500-1:1000
Formulation	PBS + 0.02% NaN ₃
Isotype	IgG
Storage Instruction	Store at -20°C for up to 1 year from the date of receipt, and avoid repeat freeze-thaw cycles.

TARGET INFORMATION

Gene ID	8518
Gene Symbol	ELP1
UniProt ID	ELP1_HUMAN
Immunogen Region	N-Term
Specificity	Reacts with the N-terminus of human IKAP protein. Sequence is 92% identical to rat and 85% identical to mouse.

ADDITIONAL INFORMATION

Note STRICTLY FOR FURTHER SCIENTIFIC RESEARCH USE ONLY (RUO). MUST NOT TO BE USED IN DIAGNOSTIC OR THERAPEUTIC APPLICATIONS.



Western Blot IKAP immunolabeling in Interleukin-1-stimulated 293 cells STJA0005692