

Anti-CD28 antibody (Ig-V-like Region) (STJA0005685)

GENERAL INFORMATION

Product Type	Primary antibodies
Applications	WB
Host / Source	Rabbit
Reactivity	Human

PRODUCT PROPERTIES

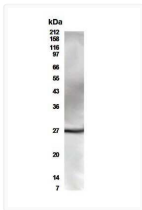
Clonality	Polyclonal
Conjugation	Unconjugated
Purification	Antigen Affinity Purified
Dilution Range	WB 1:500-1:1000
Formulation	PBS + 0.02% NaN ₃
Isotype	IgG
Storage Instruction	Store at -20°C for up to 1 year from the date of receipt, and avoid repeat freeze-thaw cycles.

TARGET INFORMATION

Gene ID	940
Gene Symbol	CD28
UniProt ID	CD28_HUMAN
Immunogen Region	Ig-V-like Region
Specificity	Reacts with the Ig-V-like region of human CD28 protein.

ADDITIONAL INFORMATION

Note STRICTLY FOR FURTHER SCIENTIFIC RESEARCH USE ONLY (RUO). MUST NOT TO BE USED IN DIAGNOSTIC OR THERAPEUTIC APPLICATIONS.



Western Blot analysis CD4 cells demonstrating specific CD28 immunolabeling STJA0005685