

Anti-Pre-pro-AVP antibody (STJA0005237)

GENERAL INFORMATION

Product Type	Primary antibodies
Applications	WB/IHC/ICC
Host / Source	Rabbit
Reactivity	Human/Mouse/Rat/Non-Human Primates

PRODUCT PROPERTIES

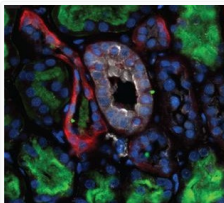
Clonality	Polyclonal
Conjugation	Unconjugated
Purification	Antigen Affinity Purified from Pooled Serum
Dilution Range	WB 1:1000 IHC 1:1000 ICC 1:1000
Formulation	10 mM HEPES (pH 7.5) , 150 mM NaCl, 100 µg per ml BSA and 50% glycerol.
Isotype	IgG
Storage Instruction	Store at -20°C for up to 1 year from the date of receipt, and avoid repeat freeze-thaw cycles.

TARGET INFORMATION

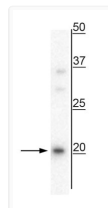
Gene ID	551
Gene Symbol	AVP
UniProt ID	NEU2_HUMAN
Specificity	Specific for locally produced levels of the ~ 20 kDa uncleaved pre-pro-vasopressin protein. Immunolabeling of the uncleaved pre-pro-vasopressin protein band is completely blocked by preadsorption of the antibody with the peptide used as antigen.

ADDITIONAL INFORMATION

Note STRICTLY FOR FURTHER SCIENTIFIC RESEARCH USE ONLY (RUO). MUST NOT TO BE USED IN DIAGNOSTIC OR THERAPEUTIC APPLICATIONS.



IHC staining pre-pro-vasopressin in human kidney collecting ducts STJA0005237



WB analysis 20 kDa pre-pro vasopressin protein in mouse whole brain lysate STJA0005237