

Anti-CSPG4 antibody (STJA0005236)

GENERAL INFORMATION

Product Type	Primary antibodies
Applications	WB/IHC
Host / Source	Rabbit
Reactivity	Human/Mouse/Rat

PRODUCT PROPERTIES

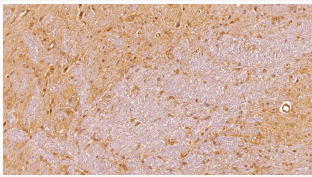
Clonality	Polyclonal
Conjugation	Unconjugated
Purification	Antigen Affinity Purified from Pooled Serum
Dilution Range	WB 1:1000 IHC 1:200
Formulation	10 mM HEPES (pH 7.5) , 150 mM NaCl, 100 µg per ml BSA and 50% glycerol.
Isotype	IgG
Storage Instruction	Store at -20°C for up to 1 year from the date of receipt, and avoid repeat freeze-thaw cycles.

TARGET INFORMATION

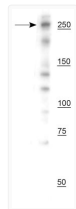
Gene ID	1464
Gene Symbol	CSPG4
UniProt ID	CSPG4_HUMAN
Specificity	Specific for endogenous levels of the ~250 kDa NG2/CSPG4 protein

ADDITIONAL INFORMATION

Note STRICTLY FOR FURTHER SCIENTIFIC RESEARCH USE ONLY (RUO). MUST NOT TO BE USED IN DIAGNOSTIC OR THERAPEUTIC APPLICATIONS.



anti-NG2-CSPG4 IHC staining oligodendrocyte precursor cells in rat brain hippocampus STJA0005236



Western blot 250 kDa CSPG4-NG2 protein band in mouse whole brain lysate STJA0005236