

Anti-Sodium Potassium ATPase antibody [SM5233] (STJA0005233)

GENERAL INFORMATION

Product Type	Primary antibodies
Applications	IHC/IF
Host / Source	Mouse
Reactivity	Human/Mouse/Rat

PRODUCT PROPERTIES

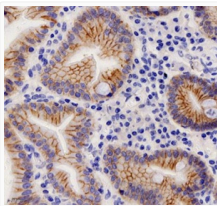
Clonality	Monoclonal
Conjugation	Unconjugated
Purification	Affinity purification
Dilution Range	IHC/IF (H, M, R) 1:1000-1:2000
Formulation	PBS with 0.02% sodium azide, 100 Mu g/ml BSA and 50% glycerol.
Isotype	IgG1
Storage Instruction	Store at -20C for up to one year, and avoid repeated freeze-thaw cycles.

TARGET INFORMATION

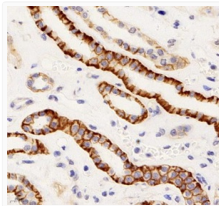
Gene ID	11928
Gene Symbol	Atp1a1
UniProt ID	AT1A1_MOUSE

ADDITIONAL INFORMATION

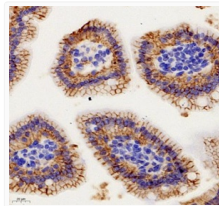
Note STRICTLY FOR FURTHER SCIENTIFIC RESEARCH USE ONLY (RUO). MUST NOT TO BE USED IN DIAGNOSTIC OR THERAPEUTIC APPLICATIONS.



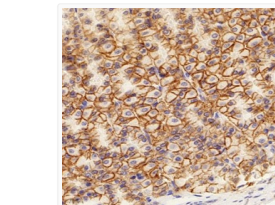
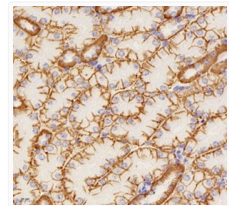
Immunohistochemistry of paraffin embedded human gastric cancer using Na K-ATPase at dilution of 1:1000



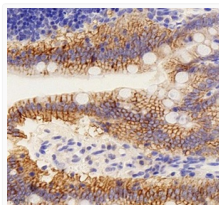
Immunohistochemistry of paraffin embedded human kidney using Na K-ATPase at dilution of 1:1000



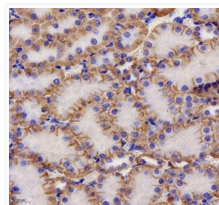
Immunohistochemistry of paraffin embedded mouse jejunum using Na K-ATPase at dilution of 1:1000



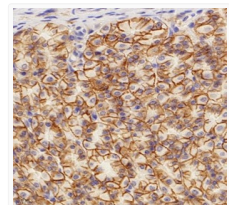
Immunohistochemistry of paraffin embedded mouse stomach using Na K-ATPase at dilution of 1:1000



Immunohistochemistry of paraffin embedded rat ileum using Na K-ATPase at dilution of 1:1000



Immunohistochemistry of paraffin embedded rat kidney using Na K-ATPase at dilution of 1:1000



Immunohistochemistry of paraffin embedded rat stomach using Na K-ATPase at dilution of 1:1000