

Anti-Glutamine Synthetase antibody [SM5207] (STJA0005207)

GENERAL INFORMATION

Product Type	Primary antibodies
Applications	WB/IHC/IF
Host / Source	Mouse
Reactivity	Human/Mouse/Rat

PRODUCT PROPERTIES

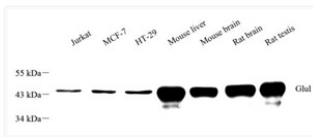
Clonality	Monoclonal
Conjugation	Unconjugated
Purification	Affinity purification
Dilution Range	WB (H, M, R) 1:500-1:1000 IHC/IF (H, M, R) 1:3000-1:6000
Formulation	PBS with 0.02% sodium azide, 100 µg/ml BSA and 50% glycerol.
Isotype	IgG
Storage Instruction	Store at -20°C for up to one year, and avoid repeated freeze-thaw cycles.

TARGET INFORMATION

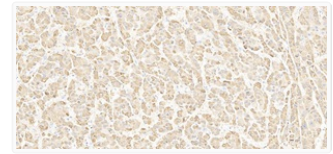
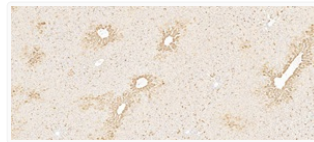
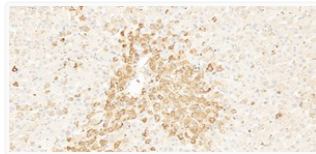
Gene ID	2752
Gene Symbol	GLUL
UniProt ID	GLNA_HUMAN

ADDITIONAL INFORMATION

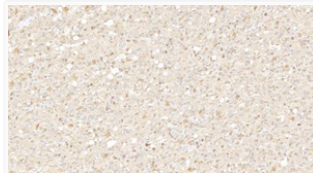
Note STRICTLY FOR FURTHER SCIENTIFIC RESEARCH USE ONLY (RUO). MUST NOT TO BE USED IN DIAGNOSTIC OR THERAPEUTIC APPLICATIONS.



Western blot analysis of Glul at dilution of 1:1000



Immunohistochemistry analysis of paraffin-embedded rat liver using GLUL at dilution of 1:6000



Immunohistochemistry analysis of paraffin-embedded human glioma using GLUL at dilution of 1:600



Immunohistochemistry analysis of paraffin-embedded mouse brain using GLUL at dilution of 1:6000