

Anti-Cytochrome C antibody [SM5173] (STJA0005173)

GENERAL INFORMATION

Product Type	Primary antibodies
Applications	WB/IHC/IF
Host / Source	Mouse
Reactivity	Mouse/Rat

PRODUCT PROPERTIES

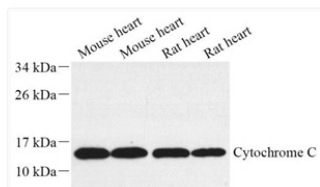
Clonality	Monoclonal
Conjugation	Unconjugated
Purification	Affinity purification
Dilution Range	WB (M, R) 1:500-1:1000 IHC/IF (H, R) 1:500-1:1000/1:250-1:1000
Formulation	PBS with 0.02% sodium azide, 100 Mu g/ml BSA and 50% glycerol.
Isotype	IgG
Storage Instruction	Store at -20C for up to one year, and avoid repeated freeze-thaw cycles.

TARGET INFORMATION

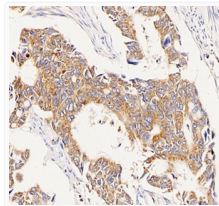
Gene ID	13063
Gene Symbol	Cycs
UniProt ID	CYC_MOUSE

ADDITIONAL INFORMATION

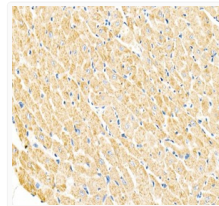
Note STRICTLY FOR FURTHER SCIENTIFIC RESEARCH USE ONLY (RUO). MUST NOT TO BE USED IN DIAGNOSTIC OR THERAPEUTIC APPLICATIONS.



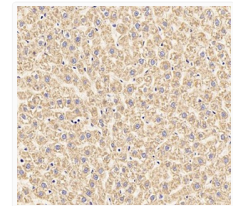
Western blot analysis of Cyt-C at dilution of 1:1000



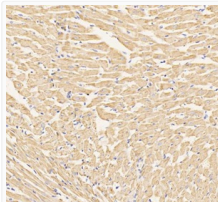
Immunohistochemistry of paraffin embedded human stomach cancer using cyt-c at dilution of 1:2000



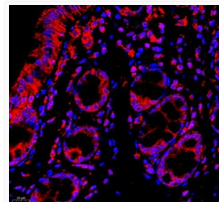
Immunohistochemistry of paraffin embedded mouse heart using cyt-c at dilution of 1:6000



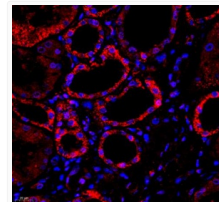
Immunohistochemistry of paraffin embedded rat liver using cyt-c at dilution of 1:2000



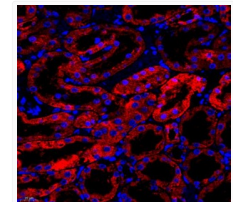
Immunohistochemistry of paraffin embedded rat heart using cyt-c at dilution of 1:2000



Immunofluorescence of paraffin embedded human colon using cytc at dilution of 1:500



Immunofluorescence of paraffin embedded human kidney using cytc at dilution of 1:500



Immunofluorescence of paraffin embedded rat kidney using cytc at dilution of 1:500