

Anti-BrdU antibody [SM5171] (STJA0005171)

GENERAL INFORMATION

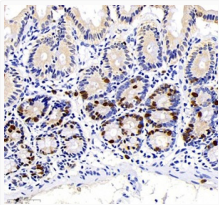
Product Type	Primary antibodies
Applications	IHC/IF
Host / Source	Mouse
Reactivity	All

PRODUCT PROPERTIES

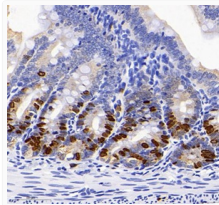
Clonality	Monoclonal
Conjugation	Unconjugated
Purification	Affinity purification
Dilution Range	IHC/IF (All species) 1:100-1:500/1:100-1:500
Formulation	PBS with 0.02% sodium azide, 100 μ g/ml BSA and 50% glycerol.
Isotype	IgG
Storage Instruction	Store at -20C for up to one year, and avoid repeated freeze-thaw cycles.

ADDITIONAL INFORMATION

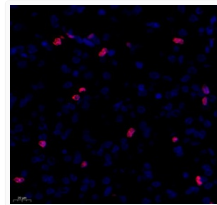
Note **STRICTLY FOR FURTHER SCIENTIFIC RESEARCH USE ONLY (RUO). MUST NOT TO BE USED IN DIAGNOSTIC OR THERAPEUTIC APPLICATIONS.**



Immunohistochemistry analysis of BrdU. Sample: mouse jejunum, 4% PFA 12-24h. Antigen retrieval: 2M HCL in pure water, 37C, 30min. Blocking buffer: 3% BSA in PBS, RT, 30min. Primary antibody: 1:500, 4C overnight. Secondary antibody: HRP Goat Anti-mouse IgG, 1:200 RT 1h.



Immunohistochemistry analysis of BrdU. Sample: mouse jejunum, 4% PFA 12-24h. Antigen retrieval: 2M HCL in pure water, 37C, 30min. Blocking buffer: 3% BSA in PBS, RT, 30min. Primary antibody: 1:500, 4C overnight. Secondary antibody: HRP Goat Anti-mouse IgG, 1:200 RT 1h.



IF analysis of BrdU. Sample: mouse neonatal mouse NA s brain, 4% PFA 12-24h. Antigen retrieval: TE buffer, 98C, 20min. Blocking buffer: 3% BSA in PBS, RT, 30min. Primary antibody: 1:500, 4C overnight. Secondary antibody: Cy3 conjugated Goat Anti-mouse IgG, 1:200 RT 1h.