

Anti-Cadherin 16 antibody [SM5125] (STJA0005125)

GENERAL INFORMATION

Product Type	Primary antibodies
Applications	WB/IHC/IF
Host / Source	Mouse
Reactivity	Mouse/Rat

PRODUCT PROPERTIES

Clonality	Monoclonal
Conjugation	Unconjugated
Purification	Affinity purification
Dilution Range	WB (M, R) 1:500-1:1000 IHC/IF (H, M, R) 1:2000-1:4000
Formulation	PBS with 0.02% sodium azide, 100 μ g/ml BSA and 50% glycerol.
Isotype	IgG
Storage Instruction	Store at -20C for up to one year, and avoid repeated freeze-thaw cycles.

TARGET INFORMATION

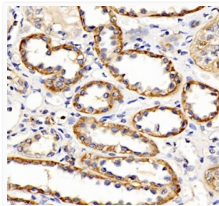
Gene ID	12556
Gene Symbol	Cdh16
UniProt ID	CAD16_MOUSE

ADDITIONAL INFORMATION

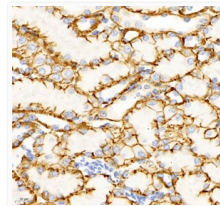
Note STRICTLY FOR FURTHER SCIENTIFIC RESEARCH USE ONLY (RUO). MUST NOT TO BE USED IN DIAGNOSTIC OR THERAPEUTIC APPLICATIONS.



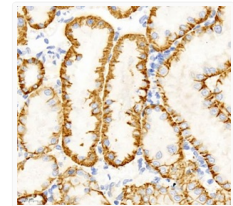
Western blot analysis of cadherin 16 at dilution of 1:1000



Immunohistochemistry of paraffin embedded human kidney using cadherin16 at dilution of 1:2000



Immunohistochemistry of paraffin embedded mouse kidney using cadherin16 at dilution of 1:2000



Immunohistochemistry of paraffin embedded rat kidney using cadherin16 at dilution of 1:2000