

Anti-NSE antibody [SM5098] (STJA0005098)

GENERAL INFORMATION

Product Type	Primary antibodies
Applications	WB/IHC/IF
Host / Source	Mouse
Reactivity	Human/Mouse/Rat

PRODUCT PROPERTIES

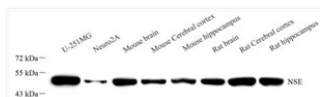
Clonality	Monoclonal
Conjugation	Unconjugated
Purification	Affinity purification
Dilution Range	WB (H, M, R) 1:1000-1:2000 IHC/IF (H, M, R) 1:1000-1:2000
Formulation	PBS with 0.02% sodium azide, 100 µg/ml BSA and 50% glycerol.
Isotype	IgG2a
Storage Instruction	Store at -20°C for up to one year, and avoid repeated freeze-thaw cycles.

TARGET INFORMATION

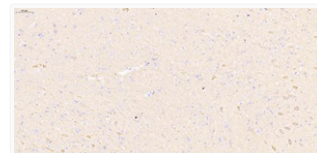
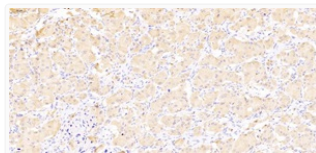
Gene ID	13807
Gene Symbol	Eno2
UniProt ID	ENOG_MOUSE

ADDITIONAL INFORMATION

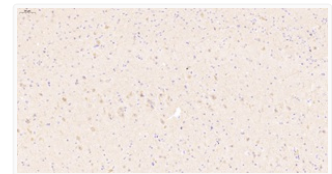
Note STRICTLY FOR FURTHER SCIENTIFIC RESEARCH USE ONLY (RUO). MUST NOT TO BE USED IN DIAGNOSTIC OR THERAPEUTIC APPLICATIONS.



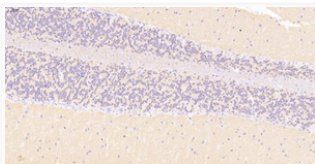
Western blot analysis of NSE at dilution of 1:1000



Immunohistochemistry analysis of paraffin-embedded mouse brain using NSE at dilution of 1:2000



Immunohistochemistry analysis of paraffin-embedded rat brain using NSE at dilution of 1:2000



Immunohistochemistry analysis of paraffin-embedded mouse cerebellum using NSE at dilution of 1:2000