

Anti-PD1 antibody [SM5095] (STJA0005095)

GENERAL INFORMATION

Product Type	Primary antibodies
Applications	IHC/IF
Host / Source	Mouse
Reactivity	Human

PRODUCT PROPERTIES

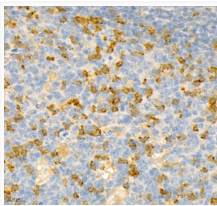
Clonality	Monoclonal
Conjugation	Unconjugated
Purification	Affinity purification
Dilution Range	IHC/IF (H) 1:800-1:2400/1:400-1:800
Formulation	PBS with 0.02% sodium azide, 100 Mu g/ml BSA and 50% glycerol.
Isotype	IgG
Storage Instruction	Store at -20C for up to one year, and avoid repeated freeze-thaw cycles.

TARGET INFORMATION

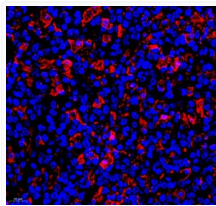
Gene ID	18566
Gene Symbol	Pdc1
UniProt ID	PDCD1_MOUSE

ADDITIONAL INFORMATION

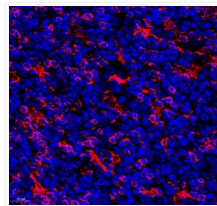
Note **STRICTLY FOR FURTHER SCIENTIFIC RESEARCH USE ONLY (RUO). MUST NOT TO BE USED IN DIAGNOSTIC OR THERAPEUTIC APPLICATIONS.**



Immunohistochemistry analysis of PD1. Sample: Human tonsil, 4% PFA 12-24h. Antigen retrieval: Citrate buffer, pressure cooker 2min. Blocking buffer: 3% BSA in PBS, RT, 30min. Primary antibody: 1:1200, 4C overnight. Secondary antibody: HRP Goat Anti-mouse IgG, 1:200 RT 1h.



IF analysis of PD1. Sample: Human B-cell lymphoma, 4% PFA 12-24h. Antigen retrieval: Citrate buffer, pressure cooker 2min. Blocking buffer: 3% BSA in PBS, RT, 30min. Primary antibody: 1:400, 4C overnight. Secondary antibody: Cy3 conjugated Goat Anti-mouse IgG, 1:200 RT 1h.



Sample: Human tonsil, 4% PFA 12-24h. Antigen retrieval: Citrate buffer, pressure cooker 2min. Blocking buffer: 3% BSA in PBS, RT, 30min. Primary antibody: 1:400, 4C overnight. Secondary antibody: Cy3 conjugated Goat Anti-mouse IgG, 1:200 RT 1h.