

Anti-beta Tubulin antibody [SM5085] (STJA0005085)

GENERAL INFORMATION

Product Type	Primary antibodies
Applications	WB
Host / Source	Mouse
Reactivity	Human/Mouse/Rat

PRODUCT PROPERTIES

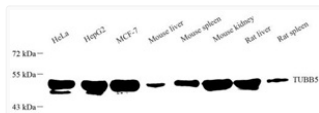
Clonality	Monoclonal
Conjugation	Unconjugated
Purification	Affinity purification
Dilution Range	WB (H, M, R) 1:1000-1:2000
Formulation	PBS with 0.02% sodium azide, 100 Mu g/ml BSA and 50% glycerol.
Isotype	IgG1
Storage Instruction	Store at -20C for up to one year, and avoid repeated freeze-thaw cycles.

TARGET INFORMATION

Gene ID	22154
Gene Symbol	Tubb5
UniProt ID	TBB5_MOUSE

ADDITIONAL INFORMATION

Note **STRICTLY FOR FURTHER SCIENTIFIC RESEARCH USE ONLY (RUO). MUST NOT TO BE USED IN DIAGNOSTIC OR THERAPEUTIC APPLICATIONS.**



Western blot analysis of TUBB5 at dilution of 1:1000