

Anti-Recombinant-beta III Tubulin antibody [SM5068] (STJA0005068)

GENERAL INFORMATION

Product Type	Primary antibodies
Applications	WB/IHC/IF
Host / Source	Mouse
Reactivity	Human/Mouse/Rat

PRODUCT PROPERTIES

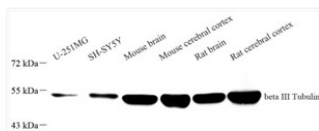
Clonality	Monoclonal
Conjugation	Unconjugated
Purification	Affinity purification
Dilution Range	WB (H, M, R) 1:1000-1:2000 IHC/IF (H, M, R, Mk) 1:600-1:1200
Formulation	PBS with 0.02% sodium azide, 100 µg/ml BSA and 50% glycerol.
Isotype	IgG1
Storage Instruction	Store at -20C for up to one year, and avoid repeated freeze-thaw cycles.

TARGET INFORMATION

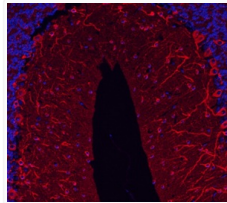
Gene ID	22152
Gene Symbol	Tubb3
UniProt ID	TBB3_MOUSE

ADDITIONAL INFORMATION

Note STRICTLY FOR FURTHER SCIENTIFIC RESEARCH USE ONLY (RUO). MUST NOT TO BE USED IN DIAGNOSTIC OR THERAPEUTIC APPLICATIONS.



WB analysis of beta III Tubulin. Sample: Protein treated by RIPA Lysis Buffer. Blocking buffer: 3% Nonfat dry milk in TBST, RT, 1h. Primary antibody: 1:1000, 4C, overnight. Secondary antibody: HRP conjugated Goat Anti-mouse IgG, 1:3000, RT, 1h.



IF analysis of beta III Tubulin red. Sample: mouse cerebellum, 4% PFA 12-24h. Blocking buffer: Blocking buffer: 3% BSA in PBS, RT, 30min. Primary antibody: 1:1000, 4C overnight. Secondary antibody: Cy3 conjugated Goat Anti-mouse IgG, 1:300, RT, 1h.