

Anti-P21 antibody [SM4972] (STJA0004972)

GENERAL INFORMATION

Product Type	Primary antibodies
Applications	IHC/IF
Host / Source	Mouse
Reactivity	Human/Mouse/Rat

PRODUCT PROPERTIES

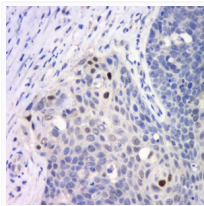
Clonality	Monoclonal
Conjugation	Unconjugated
Purification	Affinity purification
Dilution Range	IHC/IF (H, M, R) 1:500-1:1500
Formulation	PBS with 0.02% sodium azide, 100 Mu g/ml BSA and 50% glycerol.
Isotype	IgG1k
Storage Instruction	Store at -20C for up to one year, and avoid repeated freeze-thaw cycles.

TARGET INFORMATION

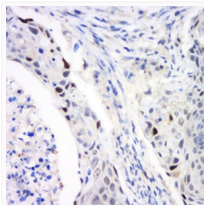
Gene ID	1026
Gene Symbol	CDKN1A
UniProt ID	CDN1A_HUMAN

ADDITIONAL INFORMATION

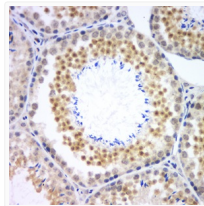
Note **STRICTLY FOR FURTHER SCIENTIFIC RESEARCH USE ONLY (RUO). MUST NOT TO BE USED IN DIAGNOSTIC OR THERAPEUTIC APPLICATIONS.**



Immunohistochemistry analysis of paraffin embedded human cervical cancer using p21 at dilution of 1:1000



Immunohistochemistry analysis of paraffin embedded human cervical cancer using p21 at dilution of 1:1000



Immunohistochemistry analysis of paraffin embedded mouse testis using p21 at dilution of 1:1000