

Anti-Insulin antibody [SM4960] (STJA0004960)

GENERAL INFORMATION

| | |
|---------------|--------------------|
| Product Type | Primary antibodies |
| Applications | WB/IHC/IF |
| Host / Source | Mouse |
| Reactivity | Mouse |

PRODUCT PROPERTIES

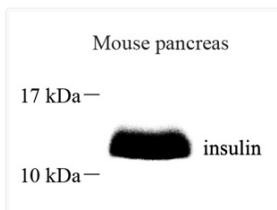
| | |
|---------------------|--|
| Clonality | Monoclonal |
| Conjugation | Unconjugated |
| Purification | Affinity purification |
| Dilution Range | WB (M) 1:1000-1:2000 IHC/IF (H, M, R) 1:1000-1:2000 |
| Formulation | PBS with 0.02% sodium azide, 100 Mu g/ml BSA and 50% glycerol. |
| Isotype | IgG2a |
| Storage Instruction | Store at -20C for up to one year, and avoid repeated freeze-thaw cycles. |

TARGET INFORMATION

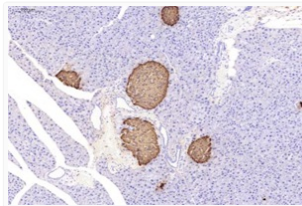
| | |
|-------------|----------------------------|
| Gene ID | 16333 |
| Gene Symbol | Ins1 |
| UniProt ID | INS1_MOUSE |

ADDITIONAL INFORMATION

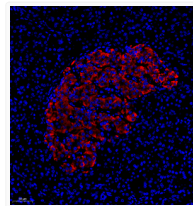
Note STRICTLY FOR FURTHER SCIENTIFIC RESEARCH USE ONLY (RUO). MUST NOT TO BE USED IN DIAGNOSTIC OR THERAPEUTIC APPLICATIONS.



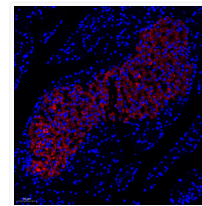
Western blot analysis of insulin. Sample: Protein treated by RIPA Lysis Buffer. Blocking buffer: 3% Nonfat dry milk in TBST, RT, 1h. Primary antibody: 1:1000, 4C overnight. Secondary antibody: HRP Goat Anti-mouse IgG, 1:3000, RT, 1h.



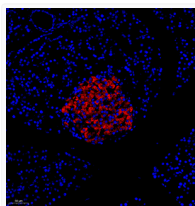
Immunohistochemistry analysis of insulin. Sample: mouse pancreas, 4% PFA 12-24h. Antigen retrieval: Citrate buffer, pressure cooker 2min. Blocking buffer: 3% BSA in PBS, RT, 30min. Primary antibody: 1:500, 4C overnight. Secondary antibody: HRP Goat Anti-mouse IgG, 1:200 RT 1h.



IF analysis of insulin. Sample: Human pancreas, 4% PFA 12-24h. Antigen retrieval: Citrate buffer, pressure cooker 2min. Blocking buffer: 3% BSA in PBS, RT, 30min. Primary antibody: 1:500, 4C overnight. Secondary antibody: Cy3 conjugated Goat Anti-mouse IgG, 1:200 RT 1h.



IF analysis of insulin. Sample: mouse pancreas, 4% PFA 12-24h. Antigen retrieval: Citrate buffer, pressure cooker 2min. Blocking buffer: 3% BSA in PBS, RT, 30min. Primary antibody: 1:500, 4C overnight. Secondary antibody: Cy3 conjugated Goat Anti-mouse IgG, 1:200 RT 1h.



IF analysis of insulin. Sample: Rat pancreas, 4% PFA 12-24h. Antigen retrieval: Citrate buffer, pressure cooker 2min. Blocking buffer: 3% BSA in PBS, RT, 30min. Primary antibody: 1:500, 4C overnight. Secondary antibody: Cy3 conjugated Goat Anti-mouse IgG, 1:200 RT 1h.