

Anti-ROR alpha/RORA antibody [SM4948] (STJA0004948)

GENERAL INFORMATION

Product Type	Primary antibodies
Applications	IHC/IF
Host / Source	Mouse
Reactivity	Human/Mouse/Rat

PRODUCT PROPERTIES

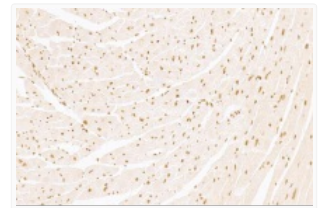
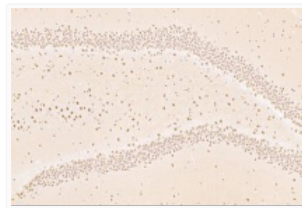
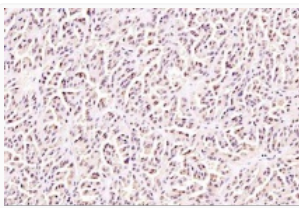
Clonality	Monoclonal
Conjugation	Unconjugated
Purification	Affinity purification
Dilution Range	IHC/IF (H, M, R) 1:900-1:1800
Formulation	PBS with 0.02% sodium azide, 100 Mu g/ml BSA and 50% glycerol.
Isotype	IgG2a
Storage Instruction	Store at -20C for up to one year, and avoid repeated freeze-thaw cycles.

TARGET INFORMATION

Gene ID	19883
Gene Symbol	Rora
UniProt ID	RORA_MOUSE

ADDITIONAL INFORMATION

Note **STRICTLY FOR FURTHER SCIENTIFIC RESEARCH USE ONLY (RUO). MUST NOT TO BE USED IN DIAGNOSTIC OR THERAPEUTIC APPLICATIONS.**



Immunohistochemistry analysis of paraffin-embedded mouse brain using RORA at dilution of 1:2000

Immunohistochemistry analysis of paraffin-embedded rat brain using RORA at dilution of 1:2000

Immunohistochemistry analysis of paraffin-embedded mouse heart using RORA at dilution of 1:2000



Immunohistochemistry analysis of paraffin-embedded rat heart using RORA at dilution of 1:2000