

## Anti-CD31 antibody [SM4910] (STJA0004910)

### GENERAL INFORMATION

|               |                    |
|---------------|--------------------|
| Product Type  | Primary antibodies |
| Applications  | IHC/IF             |
| Host / Source | Mouse              |
| Reactivity    | Human              |

### PRODUCT PROPERTIES

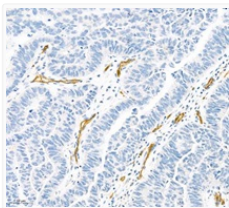
|                     |  |
|---------------------|--|
| Clonality           | Monoclonal   |
| Conjugation         | Unconjugated   |
| Purification        | Affinity purification  |
| Dilution Range      | IHC/IF (H) 1:300-1:600/1:300-1:600                                       |
| Formulation         | PBS with 0.02% sodium azide, 100 Mu g/ml BSA and 50% glycerol.           |
| Isotype             | IgG  |
| Storage Instruction | Store at -20C for up to one year, and avoid repeated freeze-thaw cycles. |

### TARGET INFORMATION

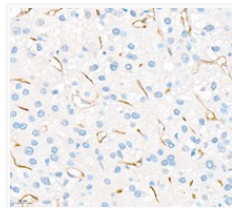
|             |                             |
|-------------|-----------------------------|
| Gene ID     | <a href="#">5175</a>        |
| Gene Symbol | <a href="#">PECAM1</a>      |
| UniProt ID  | <a href="#">PECA1_HUMAN</a> |

### ADDITIONAL INFORMATION

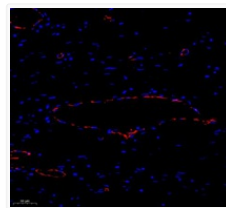
Note **STRICTLY FOR FURTHER SCIENTIFIC RESEARCH USE ONLY (RUO). MUST NOT TO BE USED IN DIAGNOSTIC OR THERAPEUTIC APPLICATIONS.**



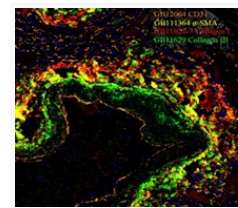
Immunohistochemistry of paraffin embedded human gastric cancer using CD31 at dilution of 1:300



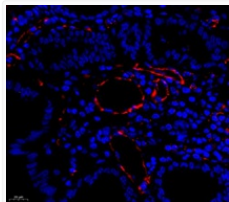
Immunohistochemistry of paraffin embedded human liver cancer using CD31 at dilution of 1:300



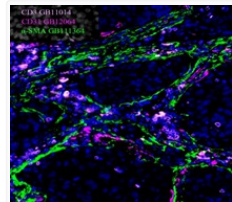
Immunofluorescence of paraffin embedded human breast cancer using CD31 at dilution of 1:300



Immunofluorescent analysis of paraffin embedded human lung using COLIII + COLI + Actin + CD31 at dilution of 1:600



Immunofluorescence of paraffin embedded human stomach using CD31 at dilution of 1:300



Immunofluorescent analysis of paraformaldehyde-fixed human lung cancer using Actin + CD31 + CD3 at dilution of 1:600