

Anti-TREM2 antibody (STJA0003865)

GENERAL INFORMATION

Product Type	Primary antibodies
Applications	WB/ICC
Host / Source	Rabbit
Reactivity	Mouse/Human

PRODUCT PROPERTIES

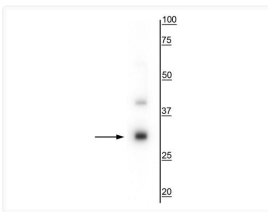
Clonality	Polyclonal
Conjugation	Unconjugated
Purification	Antigen affinity purified serum
Dilution Range	WB 1:1000 ICC 1:150
Formulation	100 μ l in 10 mM HEPES (pH 7.5) , 150 mM NaCl, 100 μ g per ml BSA and 50% Glycerol.
Isotype	IgG
Storage Instruction	Store at -20°C for up to 1 year from the date of receipt, and avoid repeat freeze-thaw cycles.

TARGET INFORMATION

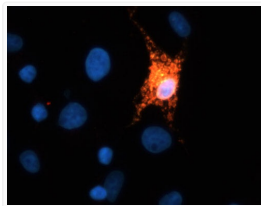
Gene ID	54209
Gene Symbol	TREM2
UniProt ID	TREM2_HUMAN

ADDITIONAL INFORMATION

Note STRICTLY FOR FURTHER SCIENTIFIC RESEARCH USE ONLY (RUO). MUST NOT TO BE USED IN DIAGNOSTIC OR THERAPEUTIC APPLICATIONS.



Western blot immunolabeling in 28 kDa mouse brain lysate



ICC staining FLAG-tagged TREM2 transfected COS cells using antibody with DAPI nuclear stain STJA0003865