

## Anti-MAP2-MAP2 antibody [4H5] (STJA0003847)

### GENERAL INFORMATION

Product Type	Primary antibodies
Applications	WB/IHC/ICC
Host / Source	Mouse
Reactivity	Bovine/Human/Mouse/Rat

### PRODUCT PROPERTIES

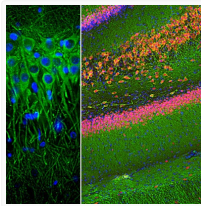
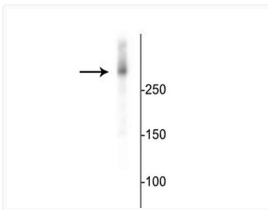
Clonality	Monoclonal
Conjugation	Unconjugated
Purification	This antibody was protein g purified culture from supernatant.
Dilution Range	WB 1:1000 IHC 1:1000 ICC 1:1000
Formulation	100 ul in PBS + 50% Glycerol and 5 mM Sodium Azide
Isotype	IgG1
Storage Instruction	Store at -20°C for up to 1 year from the date of receipt, and avoid repeat freeze-thaw cycles.

### TARGET INFORMATION

Gene ID	<a href="#">4133</a>
Gene Symbol	<a href="#">MAP2</a>
UniProt ID	<a href="#">MTAP2_HUMAN</a>

### ADDITIONAL INFORMATION

Note STRICTLY FOR FURTHER SCIENTIFIC RESEARCH USE ONLY (RUO). MUST NOT TO BE USED IN DIAGNOSTIC OR THERAPEUTIC APPLICATIONS.



Western blot 280 kDa MAP2 protein Anti-MAP2 IHC staining rat hippocampus neuronal immunolabeling in mouse cortical lysate dendrites in green STJA0003847