

## Anti-HSPD1 antibody (Full-Length) [1C7] (STJA0003845)

### GENERAL INFORMATION

Product Type	Primary antibodies
Applications	WB/IHC/ICC
Host / Source	Mouse
Reactivity	Human/Mouse/Rat/Bovine/Canine/Feline/Goat/Guinea Pig/Hamster/Horse/Non-Human Primates/Rabbit/Sheep/Zebrafish

### PRODUCT PROPERTIES

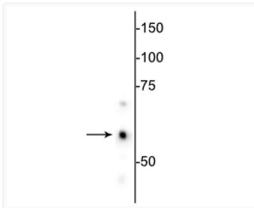
Clonality	Monoclonal
Conjugation	Unconjugated
Purification	This antibody was protein g purified culture from supernatant.
Dilution Range	WB 1:1000 IHC 1:1000-1:5000 ICC 1:500-1:5000
Formulation	100 ul in PBS + 50% Glycerol and 5 mM Sodium Azide
Isotype	IgG1
Storage Instruction	Store at -20°C for up to 1 year from the date of receipt, and avoid repeat freeze-thaw cycles.

### TARGET INFORMATION

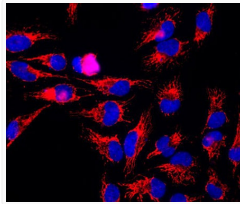
Gene ID	<a href="#">3329</a>
Gene Symbol	<a href="#">HSPD1</a>
UniProt ID	<a href="#">CH60_HUMAN</a>
Immunogen Region	Full-Length

### ADDITIONAL INFORMATION

Note STRICTLY FOR FURTHER SCIENTIFIC RESEARCH USE ONLY (RUO). MUST NOT TO BE USED IN DIAGNOSTIC OR THERAPEUTIC APPLICATIONS.



antibody Western blot 60 kDa HSP60 protein detection in HeLa cell lysate STJA0003845



IF staining HeLa cells with antibody HSP60 mitochondrial localization in red STJA0003845