

Anti-EWSR1 antibody (Full-Length) [5H7] (STJA0003830)

GENERAL INFORMATION

Product Type	Primary antibodies
Applications	WB/IHC/ICC
Host / Source	Mouse
Reactivity	Canine/Human/Mouse/Rat

PRODUCT PROPERTIES

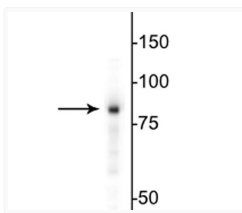
Clonality	Monoclonal
Conjugation	Unconjugated
Purification	This antibody was protein g purified culture from supernatant.
Dilution Range	WB 1:1000 IHC 1:1000 ICC 1:1000
Formulation	100 ul in PBS + 50% Glycerol and 5 mM Sodium Azide
Isotype	IgG2b
Storage Instruction	Store at -20°C for up to 1 year from the date of receipt, and avoid repeat freeze-thaw cycles.

TARGET INFORMATION

Gene ID	2130
Gene Symbol	EWSR1
UniProt ID	EWS_HUMAN
Immunogen Region	Full-Length

ADDITIONAL INFORMATION

Note STRICTLY FOR FURTHER SCIENTIFIC RESEARCH USE ONLY (RUO). MUST NOT TO BE USED IN DIAGNOSTIC OR THERAPEUTIC APPLICATIONS.



antibody Western blot detecting 85 kDa EWS protein in HeLa cell lysate STJA0003830