

Anti-UCHL1 antibody (Full-Length) (STJA0003821)

GENERAL INFORMATION

Product Type	Primary antibodies
Applications	WB/IHC/ICC
Host / Source	Chicken
Reactivity	Bovine/Human/Mouse/Pig/Rat/Canine/Feline/Goat/Guinea Pig/Hamster/Horse/Non-Human Primates/Rabbit/Sheep/Vole

PRODUCT PROPERTIES

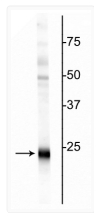
Clonality	Polyclonal
Conjugation	Unconjugated
Purification	This antibody was total igy fraction.
Dilution Range	WB 1:2500 IHC 1:500-1:1000 ICC 1:500-1:1000
Formulation	Total IgY fraction in PBS + 10 mM Sodium Azide.
Isotype	IgY
Storage Instruction	Store at -20°C for up to 1 year from the date of receipt, and avoid repeat freeze-thaw cycles.

TARGET INFORMATION

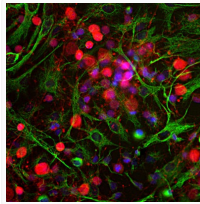
Gene ID	7345
Gene Symbol	UCHL1
UniProt ID	UCHL1_HUMAN
Immunogen Region	Full-Length

ADDITIONAL INFORMATION

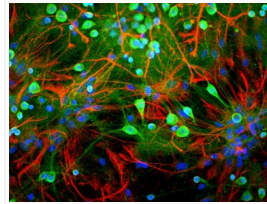
Note STRICTLY FOR FURTHER SCIENTIFIC RESEARCH USE ONLY (RUO). MUST NOT TO BE USED IN DIAGNOSTIC OR THERAPEUTIC APPLICATIONS.



Western blot 24 kDa UCHL1 protein immunolabeling in rat hippocampal homogenate STJA0003821



ICC staining using anti-UCHL1 antibody in rat cortical neuron and glial culture STJA0003821



IHC staining neuron-glia cultures using anti-UCHL1 antibody neurons in green STJA0003821