

Anti-UCHL1 antibody (Full-Length) [BH7] (STJA0003820)

GENERAL INFORMATION

Product Type	Primary antibodies
Applications	WB/IHC/ICC
Host / Source	Mouse
Reactivity	Bovine/Human/Mouse/Pig/Rat/Canine/Feline/Goat/Guinea Pig/Hamster/Horse/Non-Human Primates/Rabbit/Sheep/Vole

PRODUCT PROPERTIES

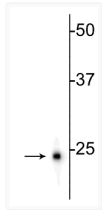
Clonality	Monoclonal
Conjugation	Unconjugated
Purification	This antibody was protein g purified culture from supernatant.
Dilution Range	WB 1:5000 IHC 1:500-1:5000 ICC 1:500-1:2000
Formulation	100 ul in PBS + 50% Glycerol and 5 mm Sodium Azide
Isotype	IgG1
Storage Instruction	Store at -20°C for up to 1 year from the date of receipt, and avoid repeat freeze-thaw cycles.

TARGET INFORMATION

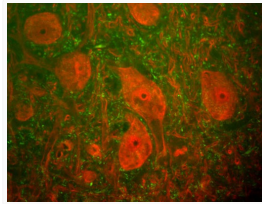
Gene ID	7345
Gene Symbol	UCHL1
UniProt ID	UCHL1_HUMAN
Immunogen Region	Full-Length

ADDITIONAL INFORMATION

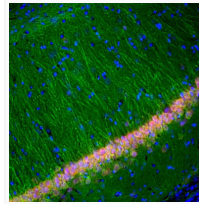
Note STRICTLY FOR FURTHER SCIENTIFIC RESEARCH USE ONLY (RUO). MUST NOT TO BE USED IN DIAGNOSTIC OR THERAPEUTIC APPLICATIONS.



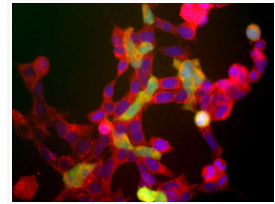
Western blot 24 kDa UCHL1 protein immunolabeling in rat hippocampal homogenate STJA0003820



anti-UCHL1 IHC staining rat spinal cord alpha-motoneurons in red STJA0003820



IHC staining rat hippocampus UCHL1 in neurons with FOX3 and DAPI STJA0003820



ICC staining HEK 293 cells using anti-UCHL1 antibody green fluorescent labeling STJA0003820