

Anti-Phospho-TH-Ser40 antibody (STJA0003819)

GENERAL INFORMATION

Product Type	Primary antibodies
Applications	WB/IHC/ICC
Host / Source	Rabbit
Reactivity	Many Mammalian/Many Non-mammalian

PRODUCT PROPERTIES

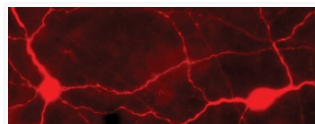
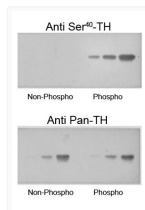
Clonality	Polyclonal
Conjugation	Unconjugated
Purification	This antibody was antigen affinity purified from pooled serum.
Dilution Range	WB 1:1000 IHC 1:1000 ICC 1:50-1:1000
Formulation	100 μ l in 10 mM HEPES (pH 7.5) , 150 mM NaCl, 100 μ g per ml BSA and 50% Glycerol.
Isotype	IgG
Storage Instruction	Store at -20°C for up to 1 year from the date of receipt, and avoid repeat freeze-thaw cycles.

TARGET INFORMATION

Gene ID	25085
Gene Symbol	Th
UniProt ID	TY3H_RAT

ADDITIONAL INFORMATION

Note STRICTLY FOR FURTHER SCIENTIFIC RESEARCH USE ONLY (RUO). MUST NOT TO BE USED IN DIAGNOSTIC OR THERAPEUTIC APPLICATIONS.



IHC staining phosphorylated TH Ser40 in light-stimulated rabbit retina STJA0003819

WB analysis phospho-TH Ser40 selective immunolabeling at 60 kDa STJA0003819