

## Anti-Phospho-TH-Ser31 antibody (STJA0003818)

### GENERAL INFORMATION

Product Type	Primary antibodies
Applications	WB/IHC/ICC
Host / Source	Rabbit
Reactivity	Human/Mouse/Rat/Non-Human Primates

### PRODUCT PROPERTIES

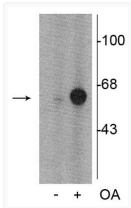
Clonality	Polyclonal
Conjugation	Unconjugated
Purification	This antibody was antigen affinity purified from pooled serum.
Dilution Range	WB 1:1000 IHC 1:300-1:1000 ICC 1:50-1:300
Formulation	100 $\mu$ l in 10 mM HEPES (pH 7.5) , 150 mM NaCl, 100 $\mu$ g per ml BSA and 50% Glycerol.
Isotype	IgG
Storage Instruction	Store at -20°C for up to 1 year from the date of receipt, and avoid repeat freeze-thaw cycles.

### TARGET INFORMATION

Gene ID	<a href="#">25085</a>
Gene Symbol	<a href="#">Th</a>
UniProt ID	<a href="#">TY3H_RAT</a>

### ADDITIONAL INFORMATION

Note STRICTLY FOR FURTHER SCIENTIFIC RESEARCH USE ONLY (RUO). MUST NOT TO BE USED IN DIAGNOSTIC OR THERAPEUTIC APPLICATIONS.



WB analysis PC-12 cell lysate tyrosine  
 hydroxylase phosphorylated at Ser31  
 STJA0003818